



***Scale-Mart Corp.***

2829 Lynx Trail Gulf Breeze, FL 32563

850 916-7399 — [www.scale-mart.com](http://www.scale-mart.com)

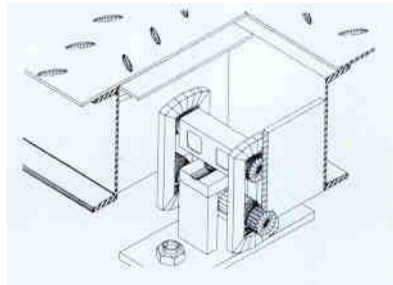


**60' X 10' - 120 Ton Steel Deck Truck Scale  
Model AMD-1060-3-120-FD3**

Active scales come standard with a limited two year warranty on the weigh-deck and all components. Extended warranties are available.

Unlike most competitors' scales, the Modu-Deck contains NO proprietary technology or components, which trap you into one source, and highest cost for parts and labor. With the Modu-Deck you have the freedom to choose any competitive, qualified, service organization to provide parts and labor for calibration and maintenance during the entire life of the scale.

This cutaway view of the Modu-Deck weighbridge shows how the load cell and mount are totally encapsulated within the weighbridge.



Most other modular design scales mount the load cells, cabling and summing boxes in a confined space between adjoining modules, creating a severe maintenance problem. Only Marginal protection is provided by a removable plate running the width of the scale. This space becomes a collecting place for mud, snow, ice and deck run-off, which often contains corrosive chemicals resulting in premature failure of the load cells, load cell mounts and summing network.

The Modu-Deck encapsulated design virtually eliminates all of these problems by creating a protected clean area for the load cell and pier area below it.

All Active Scales are N.T.E.P. approved as well as type approved for use in trade in Canada.

- 120 Ton Gross Capacity
- 40 Ton Dual Tandem Axle Capacity (CLC)
- Scale Modules Utilize 10" structural steel
- Load Cells - 75K Nickel Plated for corrosion Resistance (Ger
- All Load Cell cables are Stainless Steel Sheathed and enclosed in metal conduit
- Checking System utilizes end bumper bolts for friction free quick settling

**Scale Only (60' X 10')----- \$22,850.00**

**FOB: Brantford, Ontario**



**M-2000 Digital Readout in SS Case**

**Features:**

- Units conversion: lbs/kg
- Zero Tracking: 1-99% of d or 1,2,3d
- Resolution: +/- 52000 A/D internal counts
- Sampling rate: 100 times a second per channel
- Span stability: 2ppm/deg C
- Zero Stability: 5nV/deg C
- Linearity correction: 10 span entries
- Calibration Method: calibration through software stored in flash memory
- Calibration Sealing: physical seal or Class1 Audit Trail system, password protected
- Tare: Keyboard and scale tare, multiple tare id's can be stored in memory
- Time and Date: Y2K compliant time/date clock, internal battery backup
- Truck Database: capable of storing 150 truck id's with associated tare weights
- Truck In/Out Loop: truck in/out loop program for weigh in/ weigh out applications
- Ticket Editor: create custom tickets for serial printers. Indicator can store and recall different tickets.
- Power On: selectable on/off switch
- Loadcell Input:
  - Full Scale: 4 ranges 0-9mV, 0-19mV, 0-39mV, 0-79mV
  - Excitation: 7.5VDC, 16x350 ohm, 32x700 ohm all three channels combined

**Communications:**

- Analog Output: optional 4-20mA board via Smart Wire
- Serial Output: 2 full duplex RS232/RS422 ports
- IO Interface: periferal expansion through Smart Wire multi drop RS485 port
- External IO: up to 6 channel setpoint via Smart Wire

- Baud Rate: 150-32,400 bps, selectable
- Display:
- Size: 6 digit, 7 segment 1" red LED
- Filtering: Fast Step quick response algorithm adjustable filter
- Modes: display from CH1, CH2, CH3, and total of all channels in not legal for trade
- sites

**Electrical:**

- Power Requirements: 12VDC 1A
- Temperature Range: -45 deg C to + 45deg C
- Setpoints: 6 programmable setpoints per channel
- Sense Amplifier: differential amplifier with 4 and 6 wire
- RFI Protection: filtered signal, excitation and sense lines

**Approvals:**

- Canada: Class III/IIHD 10000
- USA: NTEP Class III/IIII 10000
- OIML: Pending

**General Features:**

- Plug and Play using standard RS232 communication.
- Logfile generation for storage of weight data
- User definable ID tags for weight samples
- Continuous weight display with adjustable time increments
- Display of all three channels simultaneously with total
- Tare / Zero each channel individually
- Printing capabilities
- Simple user interface
- Port Scanner for discovery of valid comm ports
- Will work with any WS indicator capable using DF2500 command mode 6

**\$575.00**

Optional TMU-295 Ticket Printer

**\$425.00**

**Total Equipment Only (60' X 10')----- \$23,850.00**

**Foundation**

Foundation requirements vary by state, but generally speaking will require a foundation of piers or slab with 10' level approaches on each end. These approaches must be of concrete. Sloping approaches should be 25' long and should be of a "Suitably Hard Material".

Foundation drawings for permanent installations will be provided in a timely manner upon request. They are also found on this web site... under "Foundation Drawings". All foundation work is the responsibility of the customer.

**Does not include:**

- Lifting Equipment
- Any Permits
- Any state or local taxes
- Scale House
- Electrical service
- Conduit other than provided in scale
- Load cell cable over 50'
- Any foundation work

**Installation Supervision** provided for \$1,500.00 to \$3,000.00 in Continental USA, and \$3,000.00 and up International. (including expenses)

**Availability Two to Three Weeks**

